

KINGDAR

Synergy

AXIS system VAST system MINT system



Synergy is $1 + 1 > 2$, $a \times b = \infty$.

Synergy

Café latté, cocktail, mixed essential oil, symphony, multi-function printer, camera phone, and James Bond's OMEGA; people combine different substances, so we taste more, surprise more, and live more conveniently. Some combinations not only created new things, flavors, or styles, but also generated new effects of our life. **Energy of new generations are sometimes more powerful than previous ones.**

Substances mix, senses mix, functions mix, needs mix, and life styles mix. If there's a formula of mixture we're looking for, it might be $1+1>2$, $a \times b = \infty$. We all search for the synergy to make our life better.

Berlin's new Central Station connects different transportation systems. RVs with bike attachment extend the way we move. Shopping malls change the habits of shopping. Information exchanged through different ways flattens the world.

As rivers conflux because of the gravity, sometimes there's a key in combination; such as trend, experience, innovation, technology, fun; but the rules will never be the key. If you obey all the rules you miss all the fun. While we taste the marvelous flavor, enjoy the riding in the mountain, buy all necessities of life in one hour, we create our own new life.

Working in the office can be more fun and more comfortable. Keep trying beyond efficiency, convention and rules, find your new office culture, style, environment, and synergy to make 1/3 of life better.

Materials Integration

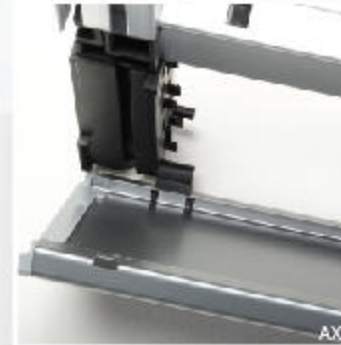
There are three kinds of materials in one AXIS frame, five in one VAST or MINT post. To complete one VAST workstation needs at least eight kinds of materials.

Every material has its own natural character, such as tensile, flexural strength, hardness, work process, smoothness and treatment of surface, etc. Creator wouldn't create these materials for no reason but to make the world better.

It depends on how we apply them.

Reduce the misuse of materials. Since we found the interaction of different materials is greater than their individual effects, we tried to integrate them. Besides, to decrease the rate of changing consumable is important, too. **Most of parts should be reusable.** After reconfigurations even the specification, modular products should be as durable and steady as previous configurations. **Recycling is the basic.** But only detachable components that can be taken apart material by material can reach the maximum benefit.

Because of integrated materials and detachable components we made, days of producing process and the volume of shipment can be reduce, too. That's a great help for mass customization and international trade.



Space Coordination

Symmetry and contrast of color and texture, level feeling of height and blocks, materials touch, spatial intuition, etc.; all of these affect what we feel in a space a lot, and being sustainable and enjoyable or not sometimes will affect, too.

The solemn, humorless and low chroma office spaces can't touch us any more. **We all desire the vivid, harmonious and inspiring space for living and working.** So, stop bearing with the changeless furniture and stop clinging to conventional thought.

In partition-base systems, traditionally, regularly thickset partitions often performed better than regularly thin ones. But, the irregular thickness appearance and the combination of different thickness system are taking over.

Maze makes people bored easily. Partitions of the same height in the office are just like a maze. To activate the environment, we have to vary the height first, and then we can add new elements, accessories, and even systems. To set different height and the raising up from bottom in partitions is possible in all KINGDAR systems.

After considering about structure and better material use, VAST presents its special style in the relationship of post and panel. MINT shows its connective ability with AXIS and lightens the look. And **it's more important that technical esthetics and vision coordination will appear naturally.**



Flexibility

It's important to make furniture systems better in shape, structure and endurance. But, **it's more important to leave the canvas blank for a designer.** If he can't plan the space at will for the conditionality of colors, materials, collocation, configuration or budget, it would be a pity.

It's a hard decision to specify the fixed specifications of our systems because we reserved all occasions for users. From functional thinking to spatial feel creating, our various options and their flexible changes will meet all needs.

The ease of installation will tell you more about flexibility. From unpacking the package to ready to connect the others, **AXIS** frame shows the flexibility of volume. The inside slot of **VAST** post contains the flexibility of panel collocation, and the outside slot creates the continuous attachment. And the panel chip of **MINT** has told the magic itself.

The further one is mixing. Combining different systems will make more fun. There will be even more configurations and possibilities to enrich office spaces and to satisfy more desire.



Keep Trying

While the world changed, needs demanded, trend varied, tech improved, we keep trying. There are no rules here, but what we've insisted are the continuous maintenance, development, and regeneration.

We keep developing. It can't always have reserved elements for later development, but we've got new experience from old systems to promote new ones. It's difficult to refresh previous systems to fit new needs; we are glad that we've made it.

We keep being touched. To hold on the confidence is hard, too. Especially we were often touched by other companies' incredible innovation. So, if we could research more, explore more, we might figure out some new ideas that will touch someone someday.

We keep sensitive. All we made will be re-projected to meet different plans, so we must be sensitive with spatial coordination, ease of installation, and availability of cooperation. We would prefer to share than to keep the discoveries. We hope the interaction among us, users and planners will inspire our innovative motivation.

We keep regenerating. Only the new generation can displace the old ones not the other families. The third generation of AXIS now we present is beyond the previous ones. There's no end on VAST and MINT, either. We believe we will reach the perfection eventually.



VAST

The relationship between panel and post is what VAST can be so special. It's developed to meet all needs and all situations might happen in office planning. So it gets steady structure, compact panels, variety of panels and accessories, creative installation, convenient raceway, and so on. Since we also know that modular furniture system is not only for physical needs but for mental comfort, the feelings are considered a lot, too. So, let's meet VAST.





VAST + MINT

Specification (cm):

VAST | Partition Height 90, 100, 130, 170 | Width 60, 90, 120 | Partition Raise Free 30
MINT | Freestanding Table 60x180, U-shape 60x120

Work Style:

Height-adjustable wide worktop with extending surface, shelves, and cabinets, the ease of zonal work space inspires efficiency and keeps the space clear and neat.



Take a note on whiteboard.



Open shelf for easy laying, heavy loading.

VAST

Specification(cm):

VAST | Partition Height 90, 170 | Width 120 | TableTop 120° 60Dx120W
Partition Raise Free 40

Work Style:

These work spaces promote comfortable individual areas. As a 80cm different in height, partitions still supports themselves well even there are cabinets hung. Big size of panel height that provides the simple vision of spaces is allowed in VAST system.



Different in height of partitions.



Partition raises free from the bottom.



VAST

Specification(cm):

VAST | Partition Height 90, 140 | Width 60, 90, 120
| TableTop 60Dx120W, 90° 60Dx60Wx120L Round 90D

Work Style:

For collaboration, colleagues share their round surface which is extending from main partitions from a panel. The embossed steel panels matched with anodized aluminum promote fine industrial craft and metal touch.



Detachable raceway panel cover.



Extending round table for collaboration.



VAST

Specification(cm):

VAST | Partition Height 90, 120, 140, 170 | Width 60, 90, 160 | TableTop 90° 60Dx160Wx180L
| Partition Raise Free 30

Work Style:

Embossed steel infuses a special texture into spaces. There are some better way to compose individual work spaces besides duplicating and making array. Try to build a partition stairway to enrich the office environment.





To generate a new space with original system is one of the reason we combine AXIS and MINT. Just like a breathing film covering the AXIS space, MINT exhibits itself a different partition style. Besides, featuring surfaces with MINT freestanding legs, there will be more possibilities in office spaces. For spatial changes and functional extending, they combine externally; but they fuse internally for rules breaking and mind exploring. AXIS+MINT is the beginning, there are more going to be continued...



AXIS + MINT

Specification(cm):

AXIS660 | Partition Height 96 | Width 60, 90, 120 | Partition Raise Free 16

MINT | Panel Screen 96Hx90W | Freestanding Table P-shape 60Dx180W

Work Style:

Linked up MINT, a big leap of reconfiguration, AXIS unfold a new team work group. Building a partial open space and talking across fences, colleagues collaborate more naturally and smoothly.



Partitions raised up in AXIS660 give space a free and airy attitude.



One of MINT freestanding joint has a arc to make leg sloping at an angle.

AXIS + MINT

Specification(cm):

AXIS808 | Partition Height 136, 216 | Width 90, 120

AXIS660 | Partition Height 96 | Width 70, 90, 120 | Table 70Dx120W | Partition Raise Free 16

MINT | Panel Screen 96hx90W, 96hx120W | Freestanding Table Ellipse 80Wx135L

Work Style:

Unite the reception area and the temporary work area into one. Different in height level of partitions figures special shape of workstation. MINT panel screens which divide space into two also lighten the space.



Extending MINT from
AXIS is as the way of
germination.



Sliding door cabinet
provides a different
way of laying.

AXIS + MINT

Specification(cm):

AXIS808 | Partition Height 176 | Width 90

MINT | Panel Screen 96Hx90W | Freestanding Table P-shape 60Dx180W

Work Style:

Practical applications are often stressed in linear work space plan. As a large capacity of storage is loaded and a light partition is set, ease of orientation comes to you. And don't forget turn on the light under the cabinet to light up your personal space.



Lift the door smoothly,
the full open space
will store more.





AXIS + MINT

Specification(cm):

AXIS808 | Partition Height 96 | Width 120 | TableTop 120* 60Dx120W

MINT | Panel Screen 216Hx100W, 96Hx90W | Freestanding Table Ellipse 80Wx135L

Work Style:

Extending work space from the high-partition is always the choice for planning. It depends on the connective ability and the correlation of systems. As 120-degree AXIS work spaces surrounded by MINT screens, creative spaces can be easily made.



AXIS + MINT

Specification(cm):

AXIS808 | Partition Height 136 | Width 90, 120

MINT | Panel Screen 96Hx120W | Freestanding Table 60Dx100W, 60Dx180W, 80Dx160W

Work Style:

Team work. The cohesive relationship between the manager and the staffs is set around the group. The thin and translucent panel screens lighten the space. The interaction of AXIS and MINT inspires the atmosphere, makes the office more vivid.



MINT

MINT is not only born for other system. With table-attachment screens, easy extending counter, freestanding surfaces, and linking up its own high panel screens, there comes a complete office space. MINT is developed for simplification in many ways including materials and combinations. But the further we've done is making more extensions, options and connective ability to other systems. That's MINT which is ready to change the spaces.



AXIS series

Integrated System Furniture

After several regenerations, AXIS series has developed a classic system in KINGDAR. There are many innovative designs and unique attributes. The capacity AXIS can contain inside, the flexibility it can be, the possibilities it may have, the graceful appearance it looks, or the easy reconfiguration it can be, etc.; we won't leave them alone.



AXIS 808 series

The thickness of partitions in AXIS808 series is 80mm and the thickness of base board is 80mm, too. AXIS system is not only for open working space but also for high partitions to make a private office. With different options, work space can be planned more variable.





AXIS 808 series

We care a lot about the ease of use in our system. For assembling staffs, from unpacking to setting, every step of installation is considered. For users, as access to wire, functional items, or storage, every situation is practiced. Try to apply the color and texture we can provide more flexible, you will find your own ambiance in office.



AXIS 668 series

The thickness of partitions in AXIS668 series is 66mm and the thickness of base board is 80mm. A little difference makes a lot of changes. There's the same capacity inside but thinner look outside, and the bottom of partitions is surrounded by covering kits to promote the fine level feeling of different thickness.



AXIS 668 series

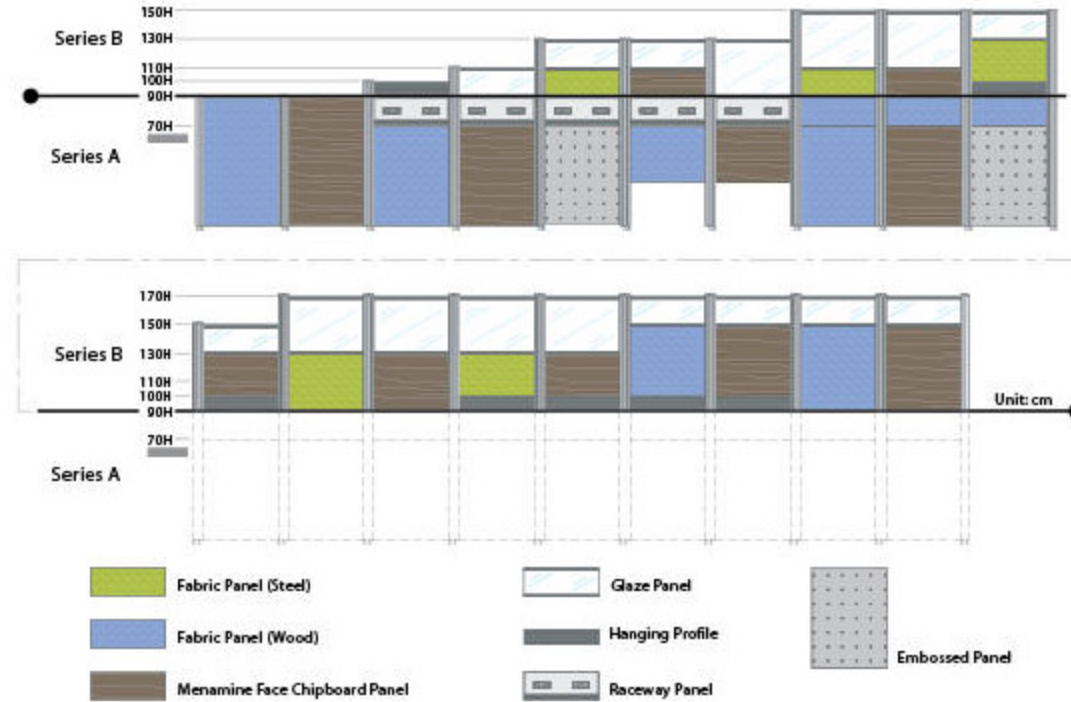


AXIS 660 series

The thickness of partitions in AXIS660 series is 66mm and there's no base board (so the end of series number is 0.) in stead of being free about 16cm high. It really lightens the space. Besides being airier, there are more practical values to raise them free, such as cleaning and air flowing. Without the base board, the wires from floor can be collected in extra covers at the bottom of frames.

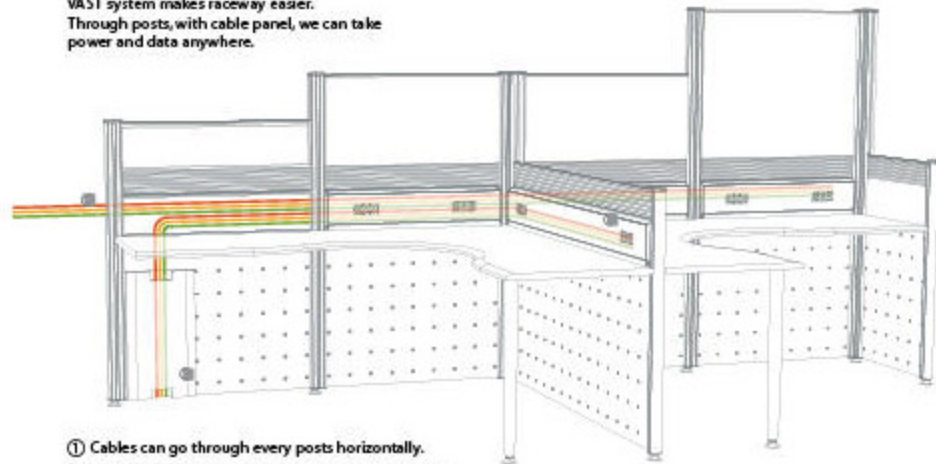


VAST Panel Collocation



VAST Raceway

VAST system makes raceway easier. Through posts, with cable panel, we can take power and data anywhere.



- ① Cables can go through every posts horizontally.
- ② Vertically cables are arranged by an additional case.
- ③ Detachable cable cover provides variety of access.



page 12

The 120-degree worktop spreads work space. Low partitions still have their level styles while we collocate them cleverly. Though there's a large proportion of aluminum, it still makes a harmony with using wood texture panels.



page 14

Gather the individual and the temporary space which is easy and open for quickly connecting and working. Various height of partitions creates different level feeling and functional needs.



page 16

Height-adjustable wide worktop with extending surface, shelves, and cabinets, the ease of zonal work space inspires efficiency and keeps the space clear and neat.



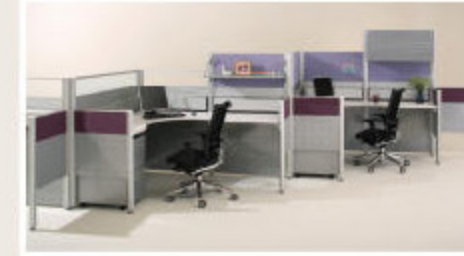
page 18

These work spaces promote comfortable individual areas. As a 80cm different in height, partitions still supports themselves well even there are cabinets hung. Big size of panel height that provides the simple vision of spaces is allowed in VAST system.



page 20

For collaboration, colleagues share their round surface which is extending from main partitions from a panel. The embossed steel panels matched with anodized aluminum promote fine industrial craft and metal touch.



page 22

Embossed steel infuses a special texture into spaces. There are some better way to compose individual work spaces besides duplicating and making array. Try to build a partition stairway to enrich the office environment.



page 24 An intermediate manager area built by low partitions. Differing from closed area, open area sometimes keeps more graceful ambience. It makes visitors more comfortable to be familiar with. AXIS and MINT also present different spatial feeling as main partitions and extending ones.



page 26 Use 216cm height partitions to make a complete working area. At the same time, intersperse space with a MINT panel screen which is light, thin and translucent. Wooden panels, lateral and upper covers perform a natural texture peacefully.



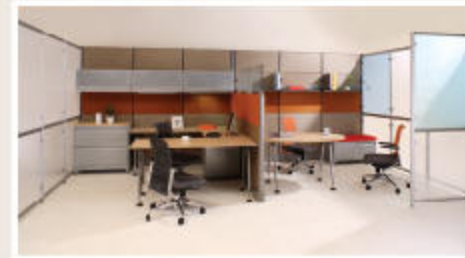
page 28 Linked up MINT, a big leap of reconfiguration, AXIS unfolds a new team work group. Building a partial open space and talking across fences, colleagues collaborate more naturally and smoothly.



page 30 Unite the reception area and the temporary work area into one. Different in height level of partitions figures special shape of workstation. MINT panel screens which divide space into two also lighten the space.



page 32 Practical applications are often stressed in linear work space plan. As a large capacity of storage is loaded and a light partition is set, ease of orientation comes to you. And don't forget turn on the light under the cabinet to light up your personal space.



page 34 Private office is surrounded by 216cm height partitions. Beyond the 136cm height partitions with glass attached, there's a different tone. Between the formal and the casual, the spatial feeling is only composed by varied accessories and the color of MINT panels.



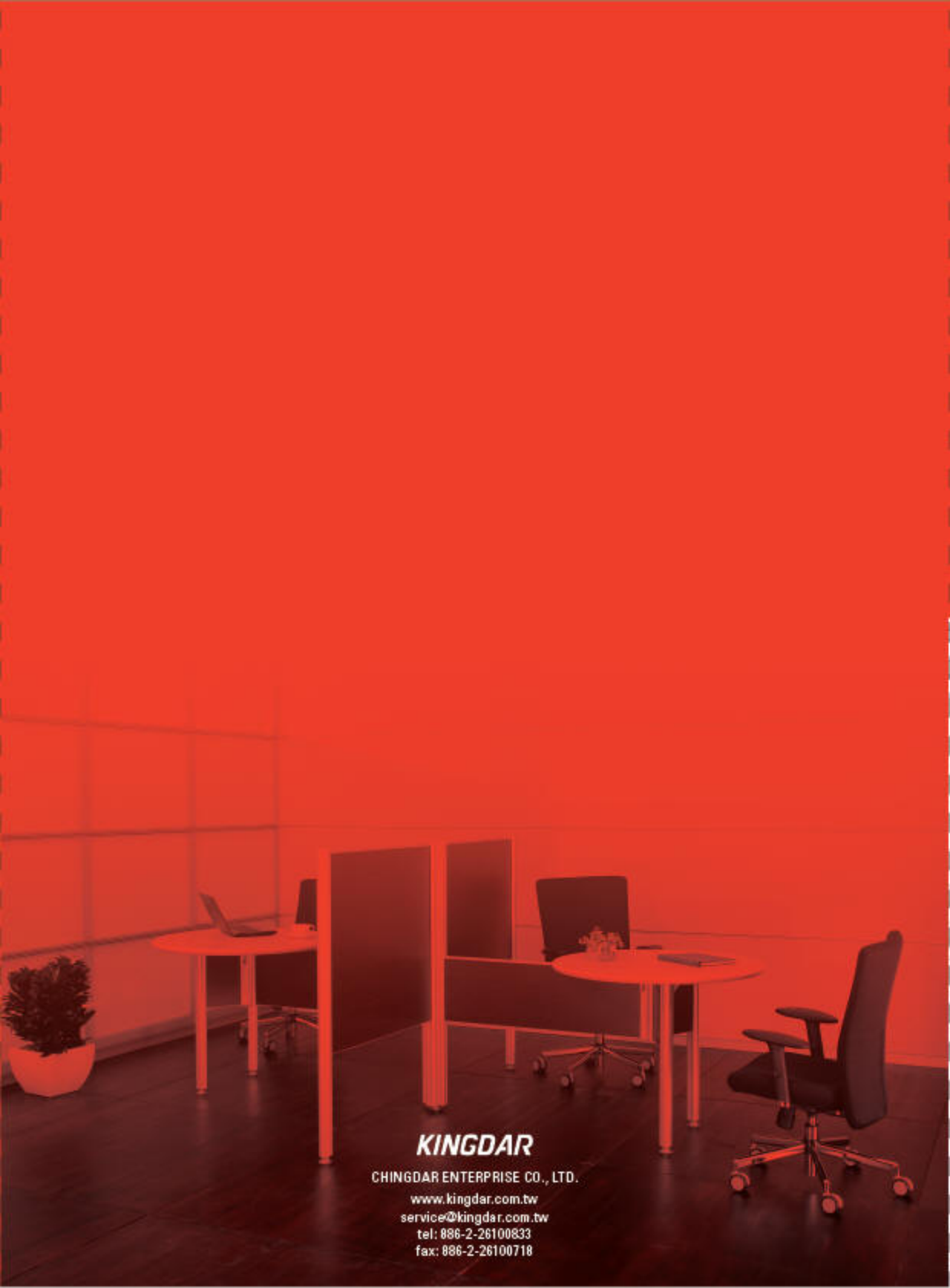
page 37 Extending work space from the high-partition is always the choice for planning. It depends on the connective ability and the correlation of systems. As 120-degree AXIS work spaces surrounded by MINT screens, creative spaces can be easily made.



page 38 Team work. The cohesive relationship between the manager and the staffs is set around the group. The thin and translucent panel screens lighten the space. The interaction of AXIS and MINT inspires the atmosphere, makes the office more vivid.



page 40 With table-attachment screens, easy counter extending, freestanding surfaces, and linking up its own high panel screens, there comes a complete office space. Co-workers may share something and discuss some issues across the screens, and they can also keep some privacy between the ones.



KINGDAR

CHINGDAR ENTERPRISE CO., LTD.

www.kingdar.com.tw

service@kingdar.com.tw

tel: 886-2-26100833

fax: 886-2-26100718